

# LLMs.txt Specification

The LLMs.txt specification represents a groundbreaking standardization effort designed to govern how websites communicate with Large Language Models and AI crawlers. As artificial intelligence becomes increasingly integrated into web search and content discovery, website owners need clear, enforceable mechanisms to control how their content is accessed, used, and attributed by AI systems. This specification draws inspiration from the widely-adopted robots.txt standard, extending its principles to address the unique challenges posed by modern AI technologies.

By [John Palmer](#)



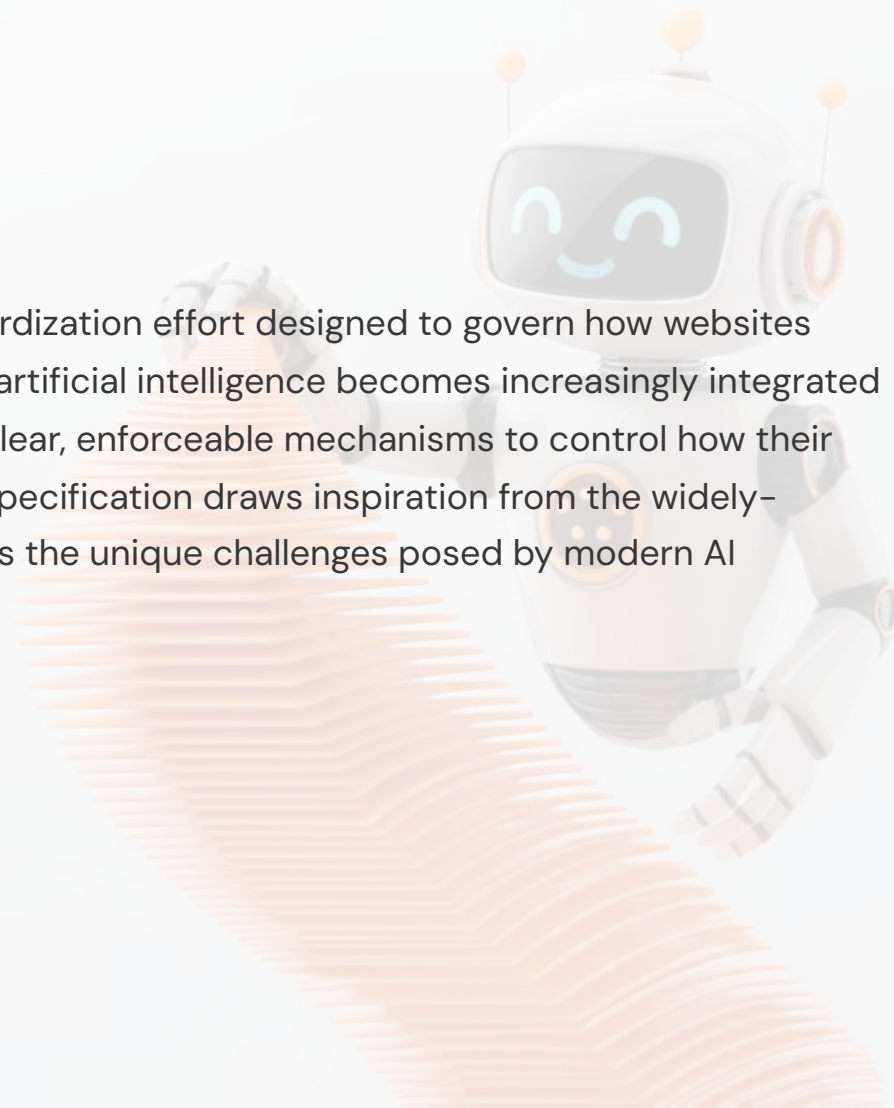
Real-time  
Data

Dvencit heauler erf aid930ion



Customizable  
Crawlers

Ureat rtiims suet: eo 960ion



# The Purpose and Vision

## Access Control

Precisely manage which AI systems can crawl and utilize your website content, giving you granular control over data access permissions.

## Citation Standards

Define your preferred data sources for citation, ensuring proper attribution when AI systems reference your content in their outputs.

## Legal Framework

Establish clear copyright, attribution, and licensing terms that protect your intellectual property while enabling appropriate AI use.

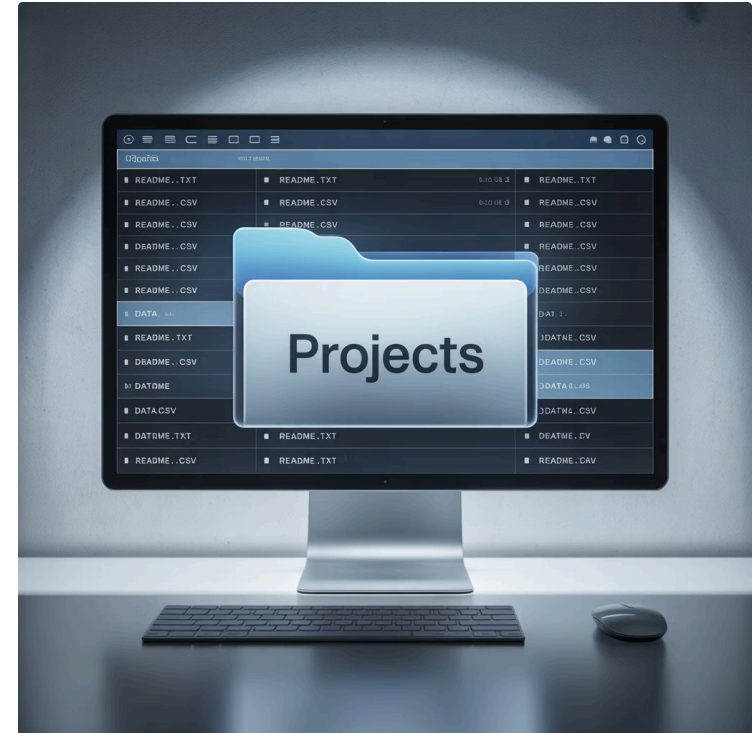
This specification emerges from the growing need to balance open information access with content creators' rights. As AI models become more sophisticated and widespread, the traditional boundaries between web crawling and content utilization have blurred. LLMs.txt provides a structured approach to navigate this complex landscape, offering website owners unprecedented control over how their digital assets are leveraged by artificial intelligence systems.

# Technical Implementation

## File Location Requirements

The LLMs.txt file must be strategically positioned at your domain's root directory, accessible via <https://yourdomain.com/llms.txt>. This standardized location ensures consistent discovery by AI crawlers across all websites implementing the specification.

Critical technical requirements include serving the file as plain text with the MIME type text/plain. This ensures universal compatibility across different AI systems and prevents parsing errors that could compromise your content policies. The root directory placement mirrors the established robots.txt convention, leveraging familiar patterns that web developers already understand and implement.



- ❗ Remember to test accessibility at <https://yourdomain.com/llms.txt> after implementation to ensure proper deployment.

# Syntax and Structure

The LLMs.txt format employs an intuitive key-value pair system, with each directive occupying a single line. This approach prioritizes readability and maintainability, allowing both humans and machines to parse the instructions effectively.

1	<div>Allow Directive</div> <div>Grants explicit permission for specified LLMs to crawl or utilize particular website paths and content areas.</div>
2	<div>Disallow Directive</div> <div>Creates access restrictions, blocking LLMs from crawling or using designated paths and sensitive content.</div>
3	<div>User-LLM Directive</div> <div>Targets specific LLM providers, similar to User-agent functionality in robots.txt, enabling granular control per AI system.</div>
4	<div>Attribution Directive</div> <div>Defines citation requirements, specifying whether you prefer links, text attribution, or no citation for AI-generated content.</div>
5	<div>License Directive</div> <div>Declares the legal framework under which your content may be utilized by AI systems and for what purposes.</div>
6	<div>Contact Directive</div> <div>Provides communication channels for partnership requests, licensing inquiries, and content usage discussions.</div>

# Real-World Implementation Example

Understanding the LLMs.txt specification becomes clearer through practical examples. Consider a website that wants to allow OpenAI models access to blog content while protecting administrative areas and maintaining strict controls over other AI systems.

```
# Allow OpenAI models to use blog content but not private areas
```

```
User-LLM: OpenAI
```

```
Allow: /blog/
```

```
Disallow: /wp-admin/
```

```
# Disallow all other LLMs except Perplexity
```

```
User-LLM: *
```

```
Disallow: /
```

```
User-LLM: Perplexity
```

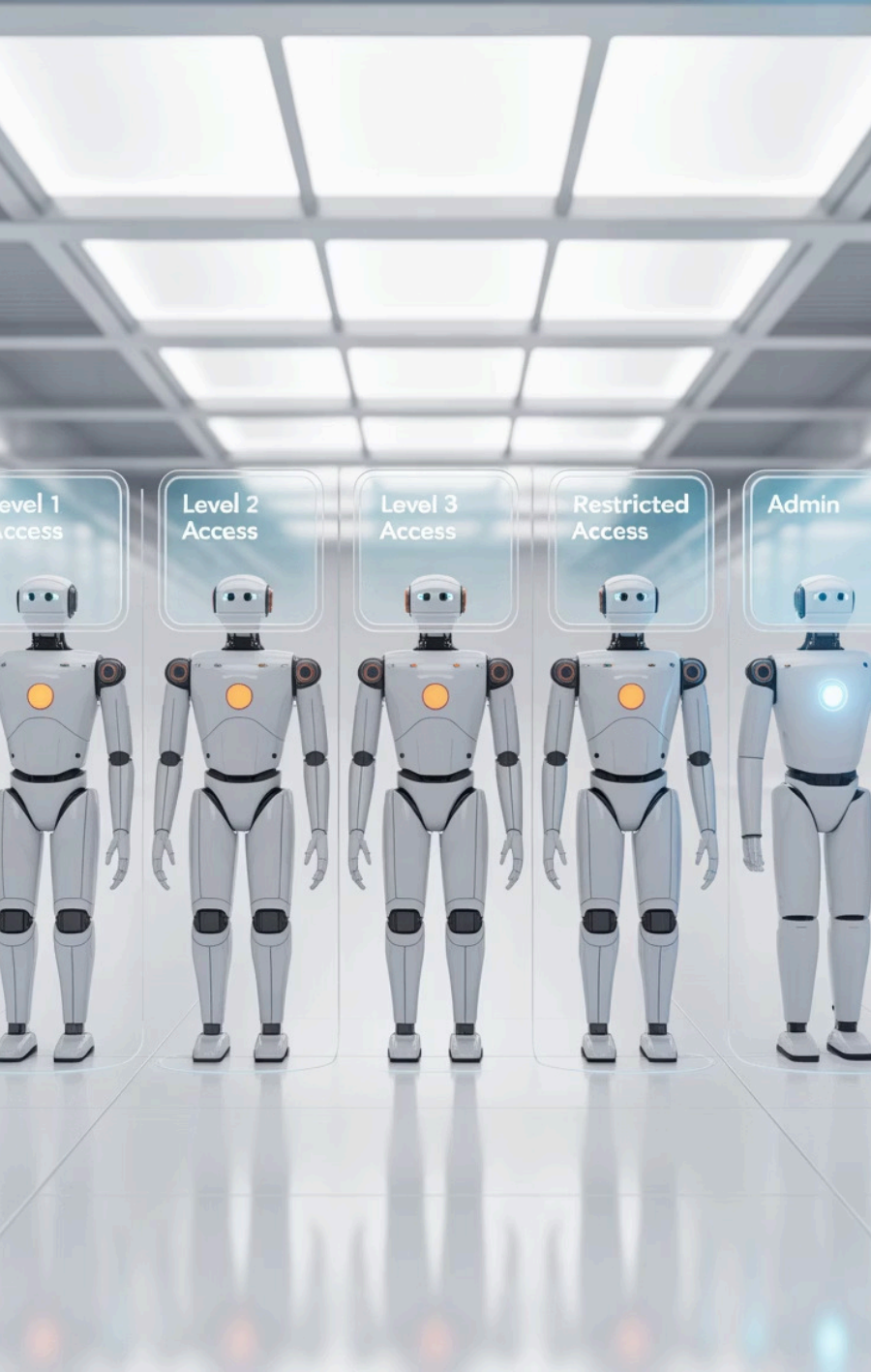
```
Allow: /blog/
```

```
Attribution: link
```

```
License: CC-BY-4.0
```

```
Contact: https://yourdomain.com/ai-use-policy
```

This configuration demonstrates sophisticated access control, differentiating between AI providers while maintaining granular permissions. The example shows how website owners can create nuanced policies that balance openness with protection, encouraging beneficial AI interactions while safeguarding sensitive content and maintaining proper attribution standards.



# Directive Deep Dive

## User-LLM Targeting

The User-LLM directive enables precise targeting of specific AI providers, including major players like OpenAI, Anthropic, Google, and Perplexity. The wildcard (\*) option provides blanket rules for all unspecified systems.

## Path Control Logic

Allow and Disallow directives follow robots.txt path-matching conventions. For example, "Allow: /blog/" grants access to all blog content, while "Disallow: /private/" creates a protected zone.

## Attribution Options

- **none** – No credit required for AI-generated content
- **text** – Plain text attribution in AI responses
- **link** – Clickable links back to source material

## Licensing Framework

License directives support standard formats including Creative Commons (CC-BY-4.0, CC0), proprietary licenses, or "All Rights Reserved" for maximum protection.

# Strategic Benefits Analysis



## Granular Content Control

Exercise precise authority over which portions of your website AI systems can access and utilize for training or response generation. This control extends beyond simple blocking to include sophisticated permission hierarchies that can differentiate between content types, user access levels, and specific AI use cases.



## Legal Compliance

Establish clear copyright and licensing frameworks that protect your intellectual property while enabling appropriate AI interactions. This proactive approach helps prevent unauthorized usage and creates legally defensible boundaries around your digital assets.



## Enhanced Visibility

Encourage proper citation practices that drive traffic back to your website, creating a virtuous cycle where AI systems become sources of qualified referral traffic rather than content competitors. Strategic attribution requirements can significantly boost your online presence.



## Future-Proofing Strategy

Position your website ahead of the curve as AI-powered search and content discovery become mainstream. Early adoption of LLMs.txt demonstrates technical sophistication and proactive content management that will become increasingly valuable as the AI landscape evolves.



# Implementation Roadmap

01

---

## File Creation and Placement

Create your LLMs.txt file with appropriate directives and place it in your website's root directory. Ensure the file is properly formatted as plain text and contains all necessary rules for your content strategy.

02

---

## Accessibility Testing

Verify that your LLMs.txt file is publicly accessible by testing the URL directly. Check that the file loads correctly and displays the expected content without formatting issues or server errors.

03

---

## Traffic Monitoring

Implement monitoring systems to track AI crawler activity and assess compliance with your LLMs.txt directives. Use analytics to understand which AI systems are accessing your content and how they're respecting your rules.

04

---

## Policy Documentation

Develop a comprehensive, human-readable AI Content Use Policy page that explains your stance on AI usage, provides context for your LLMs.txt rules, and offers contact information for partnership discussions.

05

---

## Continuous Optimization

Regularly review and update your LLMs.txt file based on changing AI landscape, new provider relationships, and evolving content strategy. Stay informed about emerging AI crawlers and adjust your policies accordingly.



# Industry Impact and Adoption

The LLMs.txt specification addresses a critical gap in the current web ecosystem, where AI systems operate without standardized guidelines for content usage. As major AI providers increasingly rely on web content for training and response generation, website owners have struggled to maintain control over their intellectual property and ensure appropriate attribution.

85%

Websites Lack AI Policies

Current sites without clear AI usage  
guidelines

Early adopters of LLMs.txt report increased control over content usage and improved relationships with AI providers. The specification's similarity to robots.txt makes it familiar to web developers, facilitating rapid adoption across diverse website types and industries.

300%

AI Traffic Growth

Increase in AI crawler activity over past year

Major content management systems are beginning to integrate LLMs.txt support, signaling growing industry recognition of its importance. This standardization effort represents a crucial step toward a more balanced relationship between content creators and AI systems.

# Moving Forward: Your Next Steps



## Assess Your Content

Evaluate which areas of your website should be accessible to AI systems and which require protection or special licensing considerations.



## Configure LLMs.txt

Create and deploy your LLMs.txt file with appropriate directives that align with your content strategy and business objectives.



## Monitor and Optimize

Track AI crawler behavior, measure the impact of your policies, and refine your approach based on real-world results and changing requirements.

The LLMs.txt specification represents more than a technical standard—it embodies a commitment to responsible AI integration that respects content creators while enabling innovation. By implementing these guidelines, you join a forward-thinking community of website owners who are actively shaping the future of AI-web interaction.

As artificial intelligence continues to evolve and integrate deeper into our digital infrastructure, having clear, machine-readable policies becomes not just beneficial but essential. The time to act is now, while the landscape is still forming and your voice can help establish the standards that will govern AI-content relationships for years to come.



Ready to implement? Start by creating your LLMs.txt file today and take control of how AI systems interact with your valuable content.